



SECONDARY SCHOOLS NATIONAL
CHAMPIONSHIPS



BASKETBALL
New Zealand



Welcome all to the 2023 Secondary Schools National Championships



REMINDERS



PLEASE REMEMBER TO

- SIGN IN AND SUPPLY YOUR CONTACT PERSON, PHONE AND ACOMMODATION
- CHECK AND SIGN YOUR ROSTER, THIS CANNOT BE CHANGED AT/AFTER YOUR FIRST GAME
 - (playing numbers can change but not names; please let Kathrynn know if you have different numbers on your light and dark strips)
- PICK UP YOUR TEAM PASSES (15 per team)!
- SCANNED THE BAR CODE!
- GET YOUR TEAM PACK, WHICH INSIDE CONTAINS
 - Latest Draw
 - Welcome Letter from Basketball Manawatū
 - Media Pass
 - Bar Code for the venue layout and links to other important documents.
 - Basketball Manawatū Social Media Policy
 - Basketball Manawatū ZERO Tolerance Policy –

REMINDER TO READ THESE LAST TWO DOCUMENTS TO YOUR PLAYERS

INTRODUCTIONS



On behalf of Basketball Manawatū, welcome to the teams & officials involved in the 2023 Championship.

From Basketball Manawatū

- General Manager – Basketball Manawatu – Mike Ryan
- Tournament Director – Tess Petley
- Tournament Volunteer Coordinator – Amy Costello
- Tournament Logistics Controller – Tom Te Puni
- Tournament Sports Chaplin – Willie Bryant

From Basketball New Zealand

- Technical Commissioner & Judicial Officer – Melony O'Connor
- Tournaments Lead – Kathryn Jelas
- Event Coordinators – Jordi Walker, Jay Macdonald, Liam Collins, Tori Williams

SSNZ TEAM ROSTER DOCUMENTS



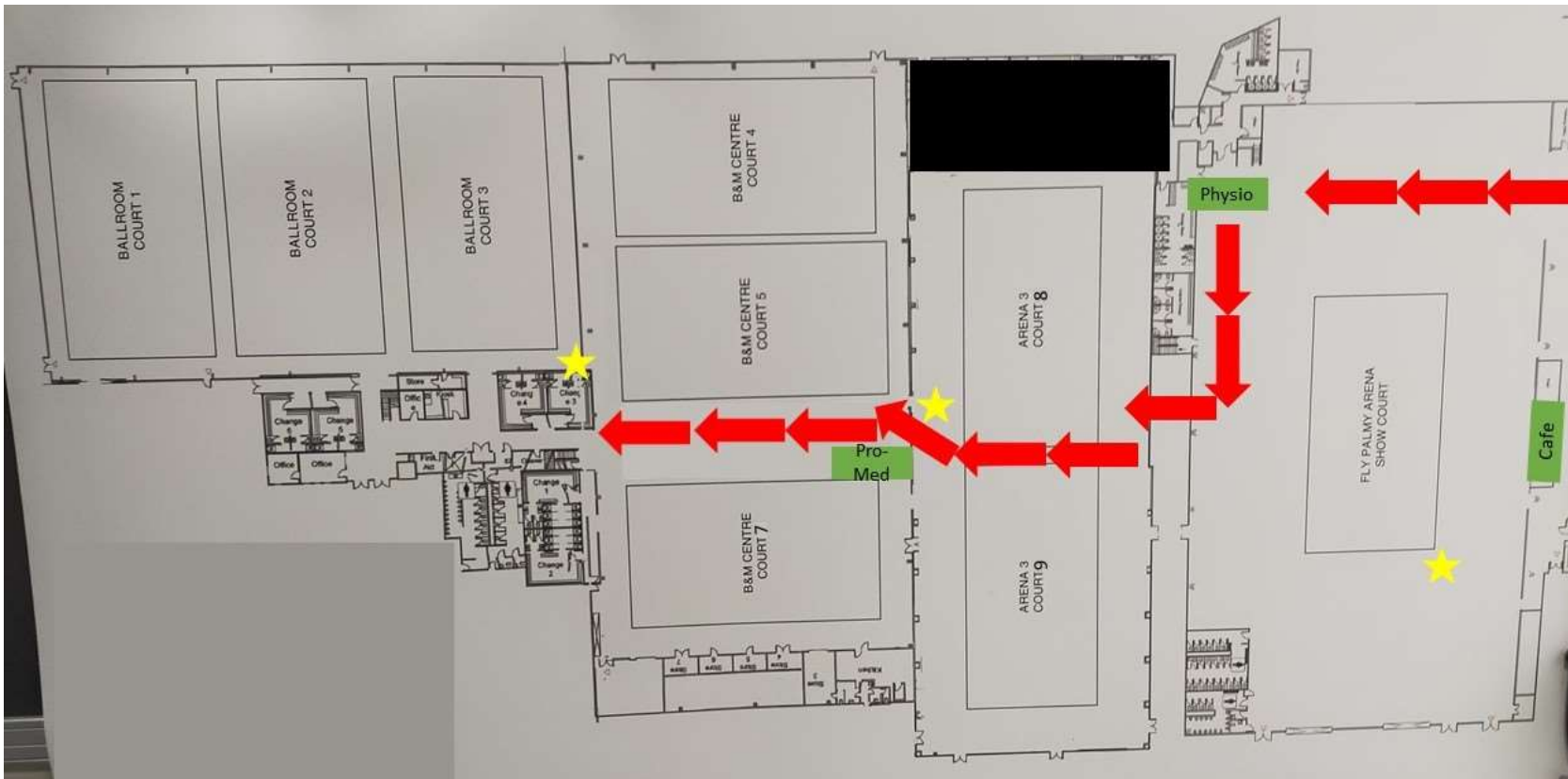
- If you have player changes these **MUST** be submitted at this meeting **BEFORE** you leave this meeting!
- They must be accompanied by an updated and signed **SSNZ ROSTER FORM**
(these do not need to be completed if you are just taking players off your roster).
- Once this meeting is finished, BBNZ will make all changes and update the teams in Game Day.
- If you do not give us the updated roster with the changes and BBNZ have not processed them, the player/s added will be **INELIGIBLE** to play in this tournament.
- Reminder you **CANNOT** add any players on the first game scoresheet – unless there has been an admin error from BBNZ's end.
- We shall be actively checking the first day scoresheets to see if anyone has been added or players taken out.

CET ARENA INFO



Court layouts and court numbers

- 1/2/3 4/5/7 8/9 Fly Palmy Arena – Show Court
- Venue open and closure times for Schools & spectators
 - 30mins pre and post the days play, please adhere to these times to allow us set up and break down each day. Control Desks shown by Stars.



CET Arena Risk Management Protocols

- **Earthquake / Natural Disaster**
- **Evacuation/Lock Down**
- **Carpark & Security**
- **Dangerous Goods & Items**
- **Contagious Diseases**

VENUE AND GAME INFO (CONT.)



- Information sharing

- Please download the “WhatsApp” app onto your smartphones
 - Send a text to **027 233 2223** with your name and Schools Name
 - You will then be joined to a Tournament Group and people can ask questions and get event information that EVERYONE in the group can see and read!
- TV Screens spread throughout the venue will display important information

- Tournament office & Control Desk locations

- B&M, and Ballroom - Baseline of court 5 is the main control area for Floor Control Ct's 1 to 7
- Arena 3 Between Court's 8 & 9
- Fly Palmy Arena – Sport Manawatu tent for Floor Control for Show Court
- Corporate Lounge on Level 1 for BBNZ office

VENUE AND GAME INFO (CONT.)



- **DAILY & WEEKLY PASSES**

- Costs as per the Draw Letter

- **Video taping**

- No on court video taping
- One Media Pass in Welcome Packs for anyone on your team who wishes to video tape a game from far end of Courts (away from Spectator seating)
- Everyone else please keep away from impeding spectators

Changing rooms and toilets

- Bookings Sheet for use of Changing Rooms is held at the Main Control Desk
- Men's, Women's & Non-Gender specific toilets are all clearly signposted throughout all of the complexes.

VENUE AND GAME INFO (CONT.)



- **Mouthguards for sale**
 - Main Control Desk in B&M Centre
 - Price - \$10-00

- **Clean up your benches**
 - quick transitions, so please just a scan & clean before you leave the area

- **Sale of foods** – In Fly Palmy Arena concourse
 - Ice-creams, etc, from the Café in Arena 4.

- **Medical**

- Schools will primarily provide initial First Aid; you can also contact floor controller or Control Desk and they will contact identified on-site First Aid Responders **Promed NZ**.
- A basic first aid kits are held at all of the Control Desks.
- Blood kits under score benches on each Court.
- Ice at Control Desks – Injuries only.
- Included in your Team Packs are a list of After-Hours Medical facilities, locations and contacts.

- **Meningococcal Meningitis**

- Please just be aware of following standard healthy practices around foods and drink

- **Measles**

- Be aware of your players general health and wellbeing.
- Keep anyone in bed, who may be unwell (this includes anyone from your Starting 5!!!!)

MEDICAL (Cont.)



Physio

- **Shannon Spicer (Active Plus), (Junior Tall Ferns Physio)**
 - available the 10.00am until 6-00pm every day
 - located the Sport Manawatū Gazebo in Fly Palmy Arena 2

(Ask at control desk in Arena 2 if you need any further information)

Sport Massage

- **Sorry, this service is not available at this tournament**

MEDICAL OFFICER CONTACT Info.



In case anyone wishes to talk to someone from the Palmerston North Public Health

Medical Officer

Office Hours : - 06 3509110

After Hours 24/7 : - 027 2580203

WHERE TO FIND INFO



- www.nz.basketball all tourney info and link to online draw and results
- www.facebook.com/basketballnz for photos and tournament updates
(Roshy is the official photographer & Emerge Visuals are the official videographers)
- [@BasketballNZ](https://twitter.com/BasketballNZ) for Twitter and Instagram
- [Game Day App](#)– Search “GAME DAY” in app store

TOURNAMENT INFORMATION



- **Balls, Scoresheets and Scorebench**

As per the Draw Letter

- Bring your own practice balls & please keep them under control at all times.
- Scorebench duty roster – As per the Draw Letter, please be aware of your duties IF you are needed
- (PLEASE check at the Control Desk, if you are needed BEFORE you leave the Arena)!

- **Glory League**

- See BBNZ Staff member to add your coach &/or manager to Glory League
- Please email Kathryn directly after the game (with your school's name and Court #) if you want to receive a copy of the game's scoresheet

- **Warm Up Area**

- Please do not use the corridors & walkways for your Pre-Post Game Team Meetings & Stretching Area; you will be moved on if you do decide to lounge about in these areas.

- **Game Results and Current Standings**

- These will be displayed on TV screens by the Main Floor Controller Desks.
- Please ask @ Control Desk if you need anything clarified.

AWARDS CEREMONY



- **Ceremony**
- “A” ceremonies – post Boys final on Thursday night
- “AA” ceremonies – post Boys final on Saturday night
- Please stick around to watch some great games and support the finalists!
- **Awards for the following**
 - Champions of each gender x 15
 - Runners up of each gender x 15
 - Third Place of each gender x15
 - Final’s officials x 2
 - Tournament team x10
 - MVP x1

LIVE STREAMING, LIVE STATS & MERCHANDISE



LIVE STREAMING

- Highlighted on draw, only on Fly Palmy Arena 2 court
- (4 games per day, 24 games total)
- Will be streamed on www.nz.basketball

LIVE STATS

- Semi Finals and Finals only
- We are doing Stats trainings on other games, but these will not be “Official Live Stats”.

MERCHANDISE

- Pure Athletic will have a stall located in Fly Palmy Arena 2 corridor.
- Onsite Monday – Monday – Friday 9am – 6pm.
- Limited amount of stock, if you haven't pre ordered get in quick!
- All pre-orders will be able to be collected from the Pure Athletic stall.

CLASSIFICATION / STANDING OF TEAMS



- **Classification of teams** - FIBA Rules as at Oct 2020 will be used.
- Classifications
 - Two-way tie then head-to-head result between the two tied teams
 - If three or more teams have the same win-loss record of all games in the Pool, then head-to-head result between the tied teams the game(s) will be used. If they have the same win-loss record of the games between them, then points differentials will be applied.
 - Points FOR minus points AGAINST will be used to establish higher goal difference – **(ONLY IN GAMES BETWEEN THE TIED TEAMS)**.
 - Further criteria is applied after that.
- **Please allow us space to work it out! We will work it out quickly and can answer any questions after this.**
- **And please no hypothetical questions about “what if’s...!!”**

BEHAVIOUR



- If someone's behaviour is deemed inappropriate, the appropriate BM &/or BBNZ personnel will have a quiet word with the offender – either during or post-match.
- If the behaviour continues or the offender responds poorly after the quiet word, the offender will be given a final chance to calm down.
- If the behaviour persists, the offender will be asked to leave the premises for the day.
- If the offender returns within the period of exclusion or continues bad behaviour after the being asked to leave the premises, they are to be removed by security, or police, and trespassed.
- The team management of the offender will be notified of the incident and will be asked to speak with the offender. This could happen at any point through this process.
- An incident report must be lodged. The incident report will be sent to the offenders Association/School and BBNZ for future reference. Where a written trespass notice is given, an incident report is not required.

REFEREE INFORMATION



- **Impartiality of referees**
- **Mouthguards**
 - As per BBNZ policy, these MUST be worn PROPERLY at all times during games.
- **Uniforms**
 - As per FIBA rules undergarments can be worn under playing strips but they must be compressed and of the same dominant colour.
- **Behaviour**
 - Coach, Player and Supporter behaviour (As per the BBNZ Code of Conduct)
 - Team management roles - including who can speak to ref, bench etc.
 - A reminder that we all have an onus to present the best possible image of our sport.

REFEREE INFORMATION (Cont.)



Team Management Roles

- The Head Coach is the only team member who can, by rule, speak to the referee. In doing so this is to ask a question in a dead ball situation.
- The Assistant Coach may only stand if the Head Coach is sitting and can only speak to their players (not the referees).
- Team management can approach the score table in a dead ball situation if any questions. However, if there is a concern, the Head Coach needs to raise this with the referees (in a polite manner in a dead ball opportunity). Please ensure that you raise concerns asap, as some errors are only correctable in a limited time period.

GAME PROTESTS

- Once the score has been finalised on the iPad by the referees, then the final noted game score stands. **There are no game protests**, please be aware of the rules above when you have a score or bench concern.
- REMEMBER you can't protest results or calls (paraphrased), but our Judicial Officer will however look at poor behaviour. This can be reported and considered in any form i.e. video, written complaint.

SPORTS CHAPLAINCY



Ko te manaaki i nga kaihakinakina
(caring for New Zealand's sports community)

- **Player Welfare**

Your players, wellbeing is our priority.

- **Brochures available to take away on Sports Chaplaincy tables that are spread around the various Arena's.**



SPONSORS AND PARTNERS



THANK YOU TO OUR OTHER MAJOR SPONSORS AND PARTNERS OF THIS TOURNAMENT

This event wouldn't be possible without the support of these brilliant sponsors and partners, so please support those who support us.



CALTEX®



New Zealand Carbon Farming

PURE
ATHLETIC

WHAKAATA
MĀORI

BAYLEYS

Apollo
PROJECTS



Local > Reliable > Fast > Broadband





BASKETBALL
New Zealand

ANY QUESTIONS??



BASKETBALL
MANAWATŪ



**On behalf of
Basketball Manawātū &
Basketball New Zealand
GOOD LUCK TO ALL TEAMS!**

