

IT'S TIME TO SHINE

2025 SECONDARY SCHOOLS NATIONAL CHAMPIONSHIPS

22 SEP - 27 SEP, CENTRAL ENERGY TRUST ARENA





Welcome all to the 2025 Secondary Schools National Championships



REMINDERS



PLEASE REMEMBER TO

- SIGN IN AND SUPPLY YOUR CONTACT PERSON, PHONE AND ACCOMMODATION
- CHECK AND SIGN YOUR ROSTER, THIS CANNOT BE CHANGED AT/AFTER YOUR FIRST GAME
 - (playing numbers can change but not names; please let Jay know if you have different numbers on your light and dark strips)
- PICK UP YOUR TEAM PASSES (16 per team)!
- Scan the QR code that'll take you to important documents relevant to this Tournament.

INTRODUCTIONS



On behalf of Basketball Manawatū, welcome to the teams & officials involved in the 2025 Championship.

From Basketball Manawatū

- General Manager – Basketball Manawatu – Mike Ryan
- Tournament LOC Lead – Tess Petley
- Tournament Logistics Controller – Tom Te Puni
- Tournament Sports Chaplin – Willie Bryant

From Basketball New Zealand

- Technical Commissioner - Cate Baxter
- Tournaments Director – Jay Macdonald
- GM Events – David Huxford
- Event Representative – Tori Williams

SSNZ TEAM ROSTER DOCUMENTS



- If you have player changes these **MUST** be submitted at this meeting **BEFORE** you leave this meeting!
- They must be accompanied by an updated and signed **SSNZ ROSTER FORM** (these do not need to be completed if you are just taking players off your roster).
- Once this meeting is finished, BBNZ will make all changes and update the teams in Game Day.
- If you do not give us the updated roster with the changes and BBNZ have not processed them, the player/s added will be **INELIGIBLE** to play in this tournament.
- Reminder you **CANNOT** add any players on the first game scoresheet – unless there has been an admin error from BBNZ's end.
- BBNZ shall be actively checking the first day scoresheets to see if anyone has been added or players taken out.

CET ARENA INFO



Court layouts and court numbers

- 1/2/3 4/5/6 7/8 Fly Palmy Arena – Show Court
 - Venue open and closure times for Schools & spectators
 - 30mins pre & post the days play, please adhere to these times to allow us set up & break down each day.
- Control Desks shown by Green Blocks, First Aid and Physio Red Stars.
Stretching Areas shown in Yellow Areas



CET ARENA HEALTH & SAFETY INFO



CET Arena Risk Management Protocols

- Walkways **MUST** be kept clear at all times.
- Earthquake / Natural Disaster
- Evacuation/Lock Down
- Carpark & Security
- Dangerous Goods & Items
- Contagious Diseases

Basketball New Zealand National Development Manager – Garratt Williamson



**BASKETBALL
New Zealand**

VENUE AND GAME INFO (CONT.)



- Information sharing

- Please download the “WhatsApp” app onto your smartphones
 - Send a text to Jay on **027 279 8804** with your name and Schools Name
 - You will then be joined to a Tournament Group and people can ask questions and get event information that EVERYONE in the group can see and read!
- TV Screens spread throughout the venue will display important information

- Tournament office & Control Desk locations

- B&M, and Ballroom - Baseline of Court 5 is the main control area for Floor Control Ct's 1 to 6
- Arena 3 Between Court's 7 & 8
- Fly Palmy Arena – Sport Manawatu tent for Floor Control for Show Court
- Corporate Lounge on Level 1 for BBNZ office

VENUE AND GAME INFO (CONT.)



- **DAILY & WEEKLY PASSES**

- Costs as per the Draw Letter

- **Video taping**

- No on court video taping, i.e. on Team Benches – must be off the court and not impeding spectators..

Changing rooms and toilets

- Bookings Sheet for use of Changing Rooms is held at the Main Control Desk
- Men's, Women's & Non-Gender specific toilets are all clearly signposted throughout all of the complexes.

VENUE AND GAME INFO (CONT.)



Mouthguards for sale

- Main Control Desk in B&M Centre
- Price - \$10-00

Clean up your benches

- quick transitions, so please just a scan & clean before you leave the area

Sale of foods – In Fly Palmy Arena concourse

Merchandise

- iAthletic will have a stall located in the gazebo jut along from the main Control Desk.
- Onsite Monday – Monday – Friday 9am – 5pm.
- Limited amount of stock, if you haven't pre ordered get in quick!
- All pre-orders will be able to be collected from the iAthletic stall.

MEDICAL



- **Medical**

- Schools will primarily provide initial First Aid; you can also contact floor controller or Control Desk and they will contact identified on-site First Aid Responders **Promed NZ**.
- A basic first aid kits are held at all of the Control Desks.
- Blood kits under score benches on each Court.
- Ice at Control Desks – Injuries only.
- Included on our website page for the Tournament is a list of After-Hours Medical facilities, locations and contacts.

- **Meningococcal Meningitis**

- Please just be aware of following standard healthy practices around foods and drink

- **Measles**

- Be aware of your players general health and wellbeing.
- Keep anyone in bed, who may be unwell (this includes anyone from your Starting 5!!!!)

MEDICAL (Cont.)



Physio

• **Kia Toa Wellness**

- Available 8:30am until 8:00pm Mon-Thurs, 8.30am-6.00pm Fri & 8.00am-4.15pm Saturday
- Located under the Gazebo between Courts 5 & 6
- Doing strapping – if players provide own strapping tape, this is free
- Offering Massage Services – Those under 16 will need to be accompanied by an adult (i.e team manager)
- Air Compression Chairs available to hire

Sport Massage

- Will also be provided, details around costs & requirements are in your Draw Letter.

Medical Officer

In case anyone wishes to talk to someone from the Palmerston North Public Health

Office Hours : - 06 3509110

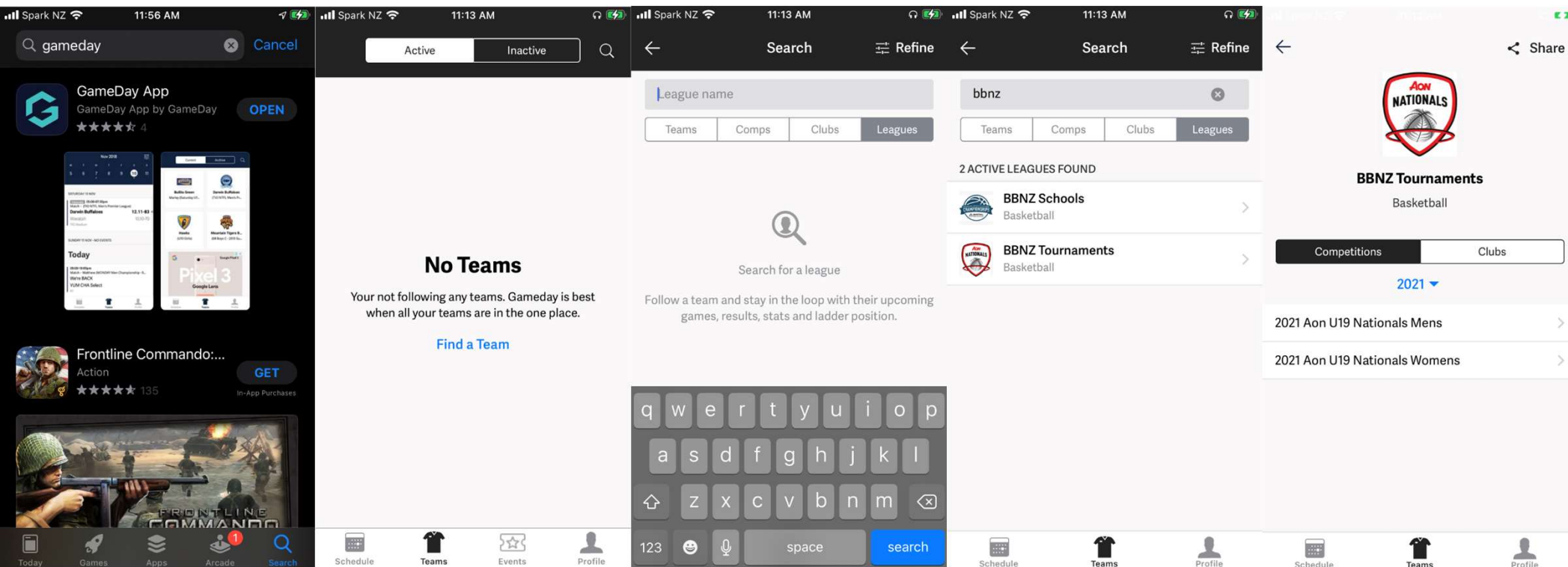
After Hours 24/7 : - 027 2580203

WHERE TO FIND INFO



- www.nz.basketball all tourney info and link to online draw and results / Livestream
- All of our photos will be uploaded to Flickr – search for Basketball New Zealand
- @BasketballNZ for Instagram & Facebook

GAMEDAY APP – ALL DRAWS / RESULTS IN REAL TIME



COMPETITION INFORMATION



The tournament will use Basketball New Zealand Regulations, FIBA Rules, Drug Free Sport New Zealand Policies and BBNZ's Match Fixing Policy.

TIMES

- Warm Up - minimum of 10 minutes
- Playing Time - 4 x 10 minute stop clock quarters
- Half Time - 5 minutes
- Quarter Time Intervals - 2 minutes
- Extra Periods - 5 minutes
- Extra Period Intervals - 2 minutes

SITTING AT THE SCOREBENCH AND IN THE EVENT OF A CLASH

- Team A MUST sit to the left - Team A is to wear their light coloured uniforms
- Team B MUST sit to the right - Team B is to wear their dark coloured uniforms

No Coaches are to wear BBNZ gear while coaching

Please wear your School Branded Gear

No Caps/Beanies allowed to be worn while coaching

TOURNAMENT INFORMATION



- **Balls, Scoresheets and Scorebench**

As per the Draw Letter

- Bring your own practice balls & please keep them under control at all times.
- Scorebench duty roster – As per the Draw Letter, please be aware of your duties IF you are needed
- (PLEASE check at the Control Desk, if you are needed BEFORE you leave the Arena)!

- **Glory League**

- See BBNZ Staff member to add your coach &/or manager to Glory League
- Please email Jay directly after the game (with your school's name and Court #) if you want to receive a copy of the game's scoresheet

- **Warm Up Area**

- Please do not use the corridors & walkways for your Pre-Post Game Team Meetings & Stretching Area; you will be moved on if you do decide to lounge about in these areas.

TOURNAMENT INFORMATION (Cont.)



- **Game Results and Current Standings**

- These will be displayed on TV screens by the Main Floor Controller Desks.
- Please ask @ Control Desk if you need anything clarified.

GLORY LEAGUE

- Public Leagues are set up for all games. This means that video footage will be loaded online after each round. Links for these can be found on bbnz.link/ssnats

GLORY LEAGUE



Please take Scorebench duty seriously!!!

- This is the official scoresheet!!!
- No phones or distractions
- Flyers at each scorebench
- Ask Floor controller if you need help.

Scoring a Game With SCOREKEEPER LITE



- 1 Choose Game
- 2 Team Setup
- 3 Team Arrows & Start
- 4 Start Game
- 5 Add Points
- 6 Choose Made/ Missed
- 7 Add Foul
- 8 Choose Fouler
- 9 Foul Type
- 10 Submit Game

1 Choose Game



2 Team Setup



3 Team Arrows & Start



5 Add Points

When a 2pt, 3pt or 1pt Shot is Made, TAP the corresponding button.



6 Choose Made or Missed

Tap the shooter's number



7 Tap To Add Foul

When the referee blows the whistle to signal a foul Tap the Foul Button on the bottom right of the iPad



8 Choose the Fouler

Choose the player who fouled



9 Choose Foul Type

Tap the big 'FOUL' button, Unless the referee advises otherwise.



10 Submit Game

Once the game is over, tap the Submit button up at the top right corner of the interface



Next Quarter

Once you reach the end of the period, hit the right arrow



Undo

If you make a mistake, tap the undo button After you've Undone your Mistake, you can enter the correct event again



CLASSIFICATION / STANDING OF TEAMS



- **Classification of teams** - FIBA Rules as at Oct 2020 will be used.
- Classifications
 - Two-way tie then head-to-head result between the two tied teams
 - If three or more teams have the same win-loss record of all games in the Pool, then head-to-head result between the tied teams the game(s) will be used. If they have the same win-loss record of the games between them, then points differentials will be applied.
 - Points FOR minus points AGAINST will be used to establish higher goal difference – **(ONLY IN GAMES BETWEEN THE TIED TEAMS)**.
 - Further criteria is applied after that.
- **Please allow us space to work it out! We will work it out quickly and can answer any questions after this.**
- **And please no hypothetical questions about “what if’s...!!”**

LIVE STREAMING & LIVE STATS



LIVE STREAMING

- Highlighted on draw, Court 3 & 4 and Fly Palmy Arena 2 court
- (4 games per day per Court, 56 games total)
- Live streaming also on Court 1 & 7 (no commentary)
- Will be streamed on www.nz.basketball/tv
 - Māori+ YouTube Channel
 - A & AA Finals to be on Whakaata Māori Linear TV

No courtside livestream please.

LIVE STATS

- Semi Finals and Finals only
- We are doing Stats trainings on other games, but these will not be “Official Live Stats”.

LIVE STREAMING & LIVE STATS (Cont.)



- BBNZ adhere to the **NZ Sport Collective Charter**
- We align with the principles and guidelines of Sport NZ's 'Keep up with the play' and 'Balance is Better' initiatives, positive parental behaviour and support, and will make every effort to align our broadcast messaging to those values.
- Be aware of what you, your team and spectators are posting – please keep it positive
- No public or private streaming as we do not have control of the space and place this goes too, amongst other reasons.
- We want everything to be positive as we all lift the brand of Basketball in NZ
- If you have any questions, please address BBNZ staff before taking opinions or false statements onto public platforms

If you have anything you want to pass onto commentators, like pronunciation or facts about players then please do so 😊

AWARDS CEREMONY



- **Ceremony**
- “A” ceremonies – post Boys final on Thursday night
- “AA” ceremonies – post Boys final on Saturday night
- Please stick around to watch some great games and support the finalists!
- **Awards for the following**
 - Champions of each gender x 15
 - Runners up of each gender x 15
 - Third Place of each gender x15
 - Final’s officials x 2
 - Tournament team x10
 - MVP x1

BEHAVIOUR EXPECTATIONS



- Coaches, Assistant Coaches & Managers would have received an email from Garratt Williamson (Judicial Officer) outlining the process for any judicial matters during the tournament
- You have been provided with a copy of the Basketball Manawātū Zero Tolerance Policy on their website, a stance BBNZ firmly supports.
- We had an unacceptable amount of complaints during Winter Tournament Week relating to racial abuse, inappropriate interactions (physical & verbal) between team coaches/players & opposition coaches/players. We will be watching this particularly closely during this week
- Players and/or coaches who are ejected automatically will automatically be reviewed by the Judicial Officer.
- Where a complaint is upheld, both teams will be notified, as will the Principal of each school.
- BBNZ has a zero tolerance policy for inappropriate behaviour by coaches, players or spectators.

REFEREE INFORMATION



TECHNICAL COMMISSIONER

- Cate Baxter

- **Mouthguards**

- As per BBNZ policy, these MUST be worn PROPERLY at all times during games.

- **Uniforms**

- As per FIBA rules undergarments can be worn under playing strips but they must be compressed and of the same dominant colour.

- **Behaviour**

- Coach, Player and Supporter behaviour (As per the BBNZ Code of Conduct)
 - Team management roles - including who can speak to ref, bench etc.
 - A reminder that we all have an onus to present the best possible image of our sport.

REFEREE INFORMATION (Cont.)



TEAM MANAGEMENT ROLES – The technical rules are

- The Head Coach is the only team manager who can by rule speak to the referee. In doing so this is to ask a question in a dead ball situation.
- The Assistant Coach may only stand if the Head Coach is sitting and can only speak to their players (not the referees).
- Team management can approach the score table in a dead ball situation if any questions. However, if there is a concern, the Head Coach needs to raise this with the referees (in a polite manner in a dead ball opportunity). Please ensure that you raise concerns asap, as some errors are only correctable in a limited time period.

GAME PROTESTS

- Once the scoresheet is signed by the referees, then the final noted game score stands. There are no game protests, please be aware of the rules above when you have a score or bench concern.

JUDICIAL

- Has already been covered off by Garratt Williamson

EJECTIONS

- Due to a disqualifying foul, will also be looked at. (These differ to someone who has had a game disqualification as a result of 2 technical fouls or unsportsmanlike combo)

SPORTS CHAPLAINCY



Ko te manaaki i nga kaihakinakina
(caring for New Zealand's sports community)

- **Player Welfare**

Your players, wellbeing is our priority.

- **Brochures available to take away on Sports Chaplaincy tables that are spread around the various Arena's.**



SPONSORS AND PARTNERS



THANK YOU TO OUR SPONSORS AND PARTNERS OF THIS TOURNAMENT



SPONSORS AND PARTNERS



THANK YOU TO OUR OTHER MAJOR SPONSORS AND PARTNERS OF THIS TOURNAMENT

This event wouldn't be possible without the support of these brilliant sponsors and partners, so please support those who support us.



Local > Reliable > Fast > Broadband



A Reminder about the Coaches Kai & Korero at 7.30pm
Corporate Area above Fly Palmy Arena
All Coaches who registered for this please attend.

ANY QUESTIONS??



**On behalf of
Basketball Manawātū &
Basketball New Zealand
GOOD LUCK TO ALL TEAMS!**

